

We care! Since 1975.

# Battery Storage System 4.8/7.2

(Lithium-Ion)



*Residential home, Germany*

## CUTTING-EDGE TECHNOLOGY

### ► Facts:

- Long Time Experience
- More than 10.000 units sold in Japan
- Ideal For Residential Home Installation
- Easy and Flexible Installation
- Completely Packed Battery Cells
- Full Access to All Electrical Data via Solarlog

### ► Data Visualization:

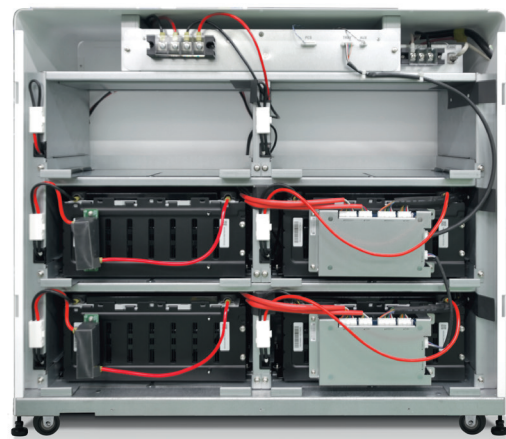
- Smartphone
- Tablet
- PC etc.



## COMPANY

As a pioneer in the photovoltaic sector, Kyocera Solar can look back on over 40 years of experience. We are also involved in numerous future-oriented solutions across the world. Our focus is on innovation and quality.

Our vision: To make solar energy accessible to everybody and to ensure a comprehensive sustained energy supply.



**ELECTRICAL PERFORMANCE****4.8****7.2****INVERTER INPUT (DC)**

Max. DC Power	[kWp]	5.5	
MPPT Voltage	[Vdc]	100 – 550	
Max. Input Current	[A]	2×15	
Max. Input Voltage	[V]	600	

**INVERTER OUTPUT (AC)**

Max. AC Power	[kW]	4.6 (Germany)	
Nominal AC Voltage	[V]	230	
Frequency	[Hz]	50	
Max. Efficiency		PV → BT charging: 96 % (4.8 kWh)/97 % (7.2 kWh) BT → Load: 93,5 % (4.8 kWh)/95 % (7.2 kWh) PV → Load: 96,5 % (4.8/7.5 kWh)	
Feed-in phase		1	

**BATTERY**

Battery Type		Lithium Ion Battery (LMO)	
Battery Capacity	[kWh]	4.8	7.2
Usable Capacity	[kWh]	3.84	5.76
Max. Discharge Depth (DOD)		80 % (8 % – 88 %)	
Cycles	[pcs]	6000	

**DATA LOGGER**

Type		Solar-Log™ 300 meter	
Electric supply	[V]	230	

**GENERAL INFORMATION**

Weight	[kg]	Inverter: 27.1 Battery: 110.5	Inverter: 27.1 Battery: 140.5
Dimension (W×H×D)	[mm]	Inverter: 510×445×177 Battery: 828×740×316	
IP Code		Inverter: IP65 Battery: IP31	
Temperature/Humidity	[°C/RH]	-10 up to +40 (non condensing)	
In case of Blackout	[s]	Switching to island mode after 1–2 s	
Certificates		CE, VDE-AR-N-4105, IEC62109-1, IEC62109-2 EN61000-6-2, EN61000-6-3, IEC62040-1	
Sales Territory		Germany, Austria	
Time Value Replacement Guarantee (eligible)		10 years (60 % of battery capacity)	
Warranty		2 years	

Your local Kyocera dealer:

**KYOCERA Europe GmbH**

Fritz-Mueller-Strasse 27  
73730 Esslingen / Germany  
Tel: +49 (0)711-93 93 49 99  
Fax: +49 (0)711-93 93 49 50  
E-Mail: solar@kyocera.de  
www.kyocerasolar.de